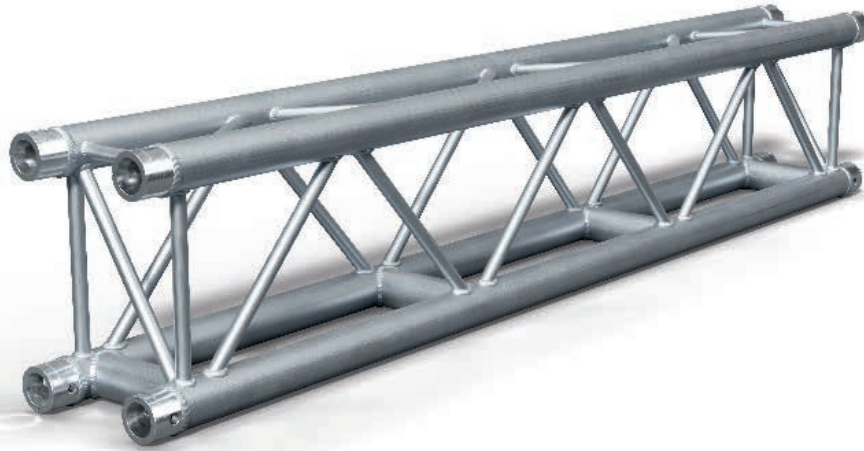




NHR34 RECTANGULAR Truss



Heavy Duty
48.3x3 mm



NHR34 RECTANGULAR

Our NHR34 is the smallest rectangular truss in our range, this truss has been specially developed for applications that require great performance. It is the perfect choice for use in narrow spaces, with a width of 190 mm and 290 mm high it is a rather small product but holds a high loading capacity. The NHR34 has four-sided diagonal webbing.

Due to its rectangular size, the storage and transport space is 30% smaller than the NX/NH34, but it still offers an equal load capacity as the NH34 and about 30% more than the NX34!

Combine the NHR34 with its corner block and use the NH24 as a leg.

The NHR34 is equipped with the NC1 connection system.

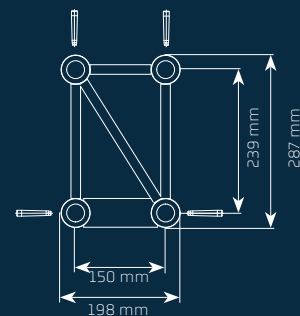
THE ESSENTIALS

- Fast and easy assembly
- The load can be attached centralized
- Narrow design
- Optimized for both in & outdoor use

Technical specifications

Height	287 mm	11.3 in
Width	198 mm	7.8 in
Size Main Tube	48.3 x 3 mm	1.90 x 0.11 in
Size Bottom Bracing	48.3 x 3 mm	1.90 x 0.11 in
Size Bracing	16x2 mm	0.62 x 0.08 in
Weight	7~ kg/mt	4.7 lb/ft
Pin Position	Horizontal below / vertically top	
Coupling System	NC1	
Alloy	EN AW 6082 T6	

Diagram





NHR34 Loading charts



Metric Loading Charts

Span	UDL		CPL		1/3 Point load		1/4 Point load		1/5 Point load	
m	kg/m	mm	kg	mm	kg (2x)	mm	kg (3x)	mm	kg (4x)	mm
2	900	1,1	1801	1,7	900	1,4	600	1,3	450	1,3
4	447	8,5	1632	12,4	894	11,6	596	10,7	447	10,3
6	295	28,7	1077	27,9	808	35,5	538	33,1	443	34,6
8	199	61,9	797	49,9	597	63,2	398	58,9	332	62,4
10	125	96,9	626	78,5	469	98,9	313	92,3	260	97,6
12	85	139,8	510	114	382	142,7	255	133,4	212	140,9
14	60	190,9	425	156,7	318	194,7	212	182,3	177	192,2
16	45	250,1	360	206,9	270	254,9	180	239,3	150	251,8
18	34	317,7	307	265,1	230	323,5	153	304,5	128	319,8

Imperial Loading Charts

Span	UDL		CPL		1/3 Point load		1/4 Point load		1/5 Point load	
ft	lbs/ft	in	lbs	in	lbs (2x)	in	lbs (3x)	in	lbs (4x)	in
6,6	605	0	3971	1	1985	1	1323	1	993	1
13,1	300	3	3599	5	1971	5	1314	4	985	4
19,7	199	11	2376	11	1782	14	1188	13	978	14
26,2	134	24	1757	20	1318	25	879	23	732	25
32,8	84	38	1380	31	1035	39	690	36	575	38
39,4	57	55	1124	45	843	56	562	53	468	55
45,9	41	75	937	62	703	77	469	72	391	76
52,5	30	98	794	81	595	100	397	94	331	99
59,1	23	125	679	104	509	127	339	120	283	126

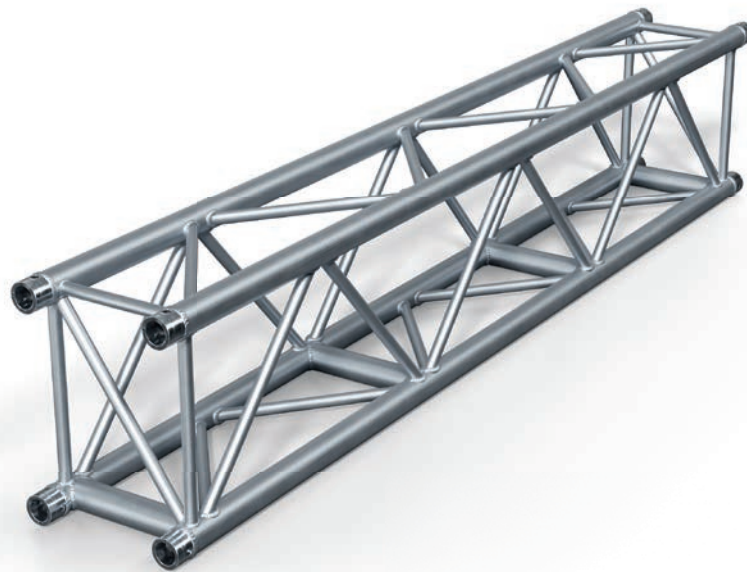
- High values of distributed loads are idealized. Loads must be applied to node points!
- Full loading tables are available on request.



NHR44 RECTANGULAR Truss



Heavy Duty
48.3x3 mm



NHR44 RECTANGULAR

Our NHR44 is a rectangular truss that has been specially developed for applications that require heavy-duty performance. With width of 290 mm and 390 mm high it is a rather small product but holds a high loading capacity. A perfect choice for rental companies and retail installations. The NHR44 has four-sided diagonal webbing and rigid horizontal bracing on the bottom side, this allows easy mounting of lighting fixtures or other central loads.

Due to its rectangular size, the storage and transport space is 25% smaller than the NH44, but it still offers an equal load capacity.

Combine the NHR44 with its corner block and use the NX/NH34 as a leg. The NHR44 is equipped with the NC1 connection system.

THE ESSENTIALS

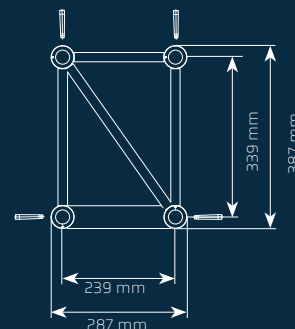
- Fast and easy assembly
- Heavy Duty Truss
- The load can be attached centralized
- Narrow design
- Optimized for both in & outdoor use

Technical specifications

Height	387 mm	15.2 in
Width	287 mm	11.3 in
Size Main Tube	48.3 x 3 mm	1.90 x 0.11 in
Size Bracing	20x2 mm	0.79 x 0.08 in
Size Bottom Bracing	48.3 x 3 mm	0.62 x 0.08 in
Weight	8~ kg/m	5.4 lb/ft

Pin Position	Horizontal below / vertically top
Coupling System	NC1
Alloy	EN AW 6082 T6

Diagram





NHR44 Loading charts



Metric Loading Charts

Span	UDL		CPL		1/3 Point load		1/4 Point load		1/5 Point load	
m	kg/m	mm	kg	mm	kg [2x]	mm	kg [3x]	mm	kg [4x]	mm
2	875	0,5	1750	0,8	875	0,7	583	0,7	437	0,6
4	434	4,2	1736	6,6	868	5,6	578	5,2	434	5
6	286	14,1	1380*	17,9	860	19	573	17,7	430	16,9
8	213	33,3	1057*	33,1	759*	40,2	557*	41,1	426	40,1
10	169	65,2	843*	52,5	618*	65	439*	64,3	362*	67,4
12	122	99,4	704*	77,8	517*	95,7	363*	93,8	296*	97,3
14	87	135,6	597*	107,8	443*	133,3	304*	128,2	251*	134,1
16	65	177,5	509*	142,2	382*	176,2	260*	168,1	214*	175,6
18	50	225,4	439*	181,9	332*	225,7	224*	213,8	187*	225

Imperial Loading Charts

Span	UDL		CPL		1/3 Point load		1/4 Point load		1/5 Point load	
ft	lbs/ft	in	lbs	in	lbs [2x]	in	lbs [3x]	in	lbs [4x]	in
6,6	588	0	3860	0	1930	0	1287	0	965	0
13,1	292	2	3828	3	1914	2	1276	2	957	2
19,7	193	6	3042*	7	1898	7	1265	7	949	7
26,2	143	13	2330*	13	1673*	16	1228*	16	941	16
32,8	114	26	1858*	21	1362*	26	968*	25	798*	27
39,4	82	39	1552*	31	1140*	38	800*	37	653*	38
45,9	59	53	1316*	42	977*	52	670*	50	553*	53
52,5	44	70	1122*	56	842*	69	573*	66	472*	69
59,1	34	89	968*	72	732*	89	494*	84	412*	89

- High values of distributed loads are idealized. Loads must be applied to node points!
- Full loading tables are available on request.

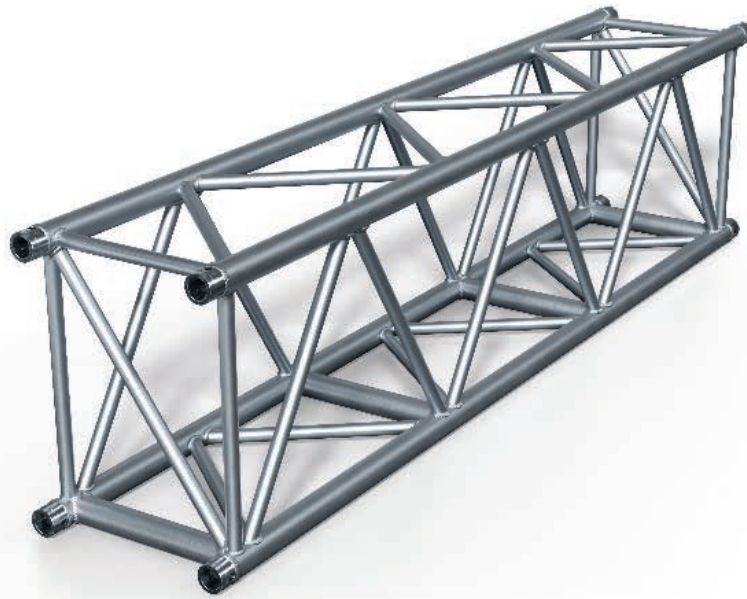
* limited by interaction of shear and moment at the connection
Displacement connection is decisive!



NHR52 RECTANGULAR Truss



Heavy Duty
48.3x3 mm



NHR52 RECTANGULAR

Our NHR52 is a rectangular heavy-duty truss that has been specially developed for applications that require heavy-duty performance. With width of 390 mm and 520 mm height it is a rather small product but holds a high loading capacity. A perfect choice for rental companies and retail installations.

The NHR52 has four-sided diagonal webbing and rigid horizontal bracing on the bottom side, this allows easy mounting of lighting fixtures or other central loads.

Due to its rectangular size, the storage and transport space is 25% smaller than the NS52, but it still offers an equal load capacity.

Combine the NHR52 with its corner block and use the NX/NH44 as a leg. The NHR52 is equipped with the NC1 connection system.

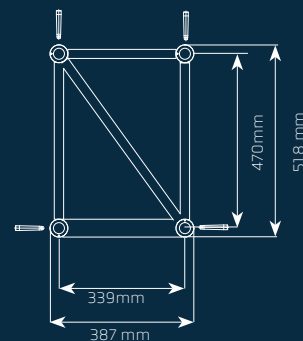
THE ESSENTIALS

- Fast and easy assembly
- Heavy Duty Truss
- The load can be attached centralized
- Narrow design
- Optimized for both in & outdoor use

Technical specifications

Height	518 mm	20.4 in
Width	387 mm	15.2 in
Size Main Tube	48.3 x 3 mm	1.90 x 0.11 in
Size Bracing	25x3 mm	0.98 x 0.12 in
Size Bottom Bracing	48.3 x 3 mm	0.62 x 0.08 in
Weight	9,5- kg/m	6.4 lb/ft
Pin Position	horizontal below / vertically top	
Coupling System	NC1	
Alloy	EN AW 6082 T6	

Diagram





NHR52 Loading charts

Metric Loading Charts

Span	UDL		CPL		1/3 Point load		1/4 Point load		1/5 Point load	
m	kg/m	mm	kg	mm	kg (2x)	mm	kg (3x)	mm	kg (4x)	mm
4	1036	5,2	2248*	4,5	1327*	4,5	954*	4,5	757*	4,6
6	688	17,4	1808*	12,3	1132*	13,1	851*	13,7	682*	14
8	394	31,9	1469*	23,9	972*	26,9	750*	28,9	619*	30,3
10	249	49,9	1236*	39,9	833*	45,6	624	47,5	520	50,3
12	170	72	1024	58,4	730*	70,1	512	68,6	426	72,6
14	123	98,2	861	80	640*	99,3	430	93,7	359	99
16	92	128,6	737	105,3	553	131,2	368	122,8	307	129,5
18	71	163,2	639	134,4	479	166,3	319	156	266	164,3
20	55	202	558	167,6	419	205,8	279	193,4	232	203,4

Imperial Loading Charts

Span	UDL		CPL		1/3 Point load		1/4 Point load		1/5 Point load	
ft	lbs/ft	in	lbs	in	lbs (2x)	in	lbs (3x)	in	lbs (4x)	in
13,1	697	2	4956*	2	2926*	2	2103*	2	1669*	2
19,7	463	7	3986*	5	2496*	5	1876*	5	1504*	6
26,2	265	13	3239*	9	2143*	11	1653*	11	1365*	12
32,8	168	20	2725*	16	1836*	18	1376	19	1146	20
39,4	115	28	2258	23	1609*	28	1129	27	941	29
45,9	83	39	1900	31	1411*	39	950	37	791	39
52,5	62	51	1626	41	1220	52	813	48	677	51
59,1	48	64	1409	53	1057	65	705	61	587	65
65,6	38	80	1232	66	924	81	616	76	513	80

- High values of distributed loads are idealized. Loads must be applied to node points!
- Full loading tables are available on request.

* limited by interaction of shear and moment at the connection
Displacement connection is decisive!

NHR34 LENGTHS



Productcode	Description
NHR34-021	Rectangular NHR34 LENGTH 21 CM 48,3x3mm
NHR34-025	Rectangular NHR34 LENGTH 25 CM 48,3x3mm
NHR34-029	Rectangular NHR34 LENGTH 29 CM 48,3x3mm
NHR34-050	Rectangular NHR34 LENGTH 50 CM 48,3x3mm
NHR34-058	Rectangular NHR34 LENGTH 58 CM 48,3x3mm
NHR34-071	Rectangular NHR34 LENGTH 71 CM 48,3x3mm
NHR34-075	Rectangular NHR34 LENGTH 75 CM 48,3x3mm
NHR34-100	Rectangular NHR34 LENGTH 100 CM 48,3x3mm
NHR34-150	Rectangular NHR34 LENGTH 150 CM 48,3x3mm
NHR34-200	Rectangular NHR34 LENGTH 200 CM 48,3x3mm
NHR34-250	Rectangular NHR34 LENGTH 250 CM 48,3x3mm
NHR34-300	Rectangular NHR34 LENGTH 300 CM 48,3x3mm
NHR34-350	Rectangular NHR34 LENGTH 350 CM 48,3x3mm
NHR34-400	Rectangular NHR34 LENGTH 400 CM 48,3x3mm

NHR44 LENGTHS



Productcode	Description
NHR44-025	Rectangular NHR44 LENGTH 25 CM 48,3x3mm
NHR44-050	Rectangular NHR44 LENGTH 50 CM 48,3x3mm
NHR44-075	Rectangular NHR44 LENGTH 75 CM 48,3x3mm
NHR44-081	Rectangular NHR44 LENGTH 81 CM 48,3x3mm
NHR44-100	Rectangular NHR44 LENGTH 100 CM 48,3x3mm
NHR44-150	Rectangular NHR44 LENGTH 150 CM 48,3x3mm
NHR44-200	Rectangular NHR44 LENGTH 200 CM 48,3x3mm
NHR44-250	Rectangular NHR44 LENGTH 250 CM 48,3x3mm
NHR44-300	Rectangular NHR44 LENGTH 300 CM 48,3x3mm
NHR44-350	Rectangular NHR44 LENGTH 350 CM 48,3x3mm
NHR44-400	Rectangular NHR44 LENGTH 400 CM 48,3x3mm

NHR52 LENGTHS



Productcode	Description
NHR52-050	Rectangular NHR52 LENGTH 50CM 48,3x3mm
NHR52-100	Rectangular NHR52 LENGTH 100CM 48,3x3mm
NHR52-150	Rectangular NHR52 LENGTH 150CM 48,3x3mm
NHR52-200	Rectangular NHR52 LENGTH 200CM 48,3x3mm
NHR52-250	Rectangular NHR52 LENGTH 250CM 48,3x3mm
NHR52-300	Rectangular NHR52 LENGTH 300CM 48,3x3mm
NHR52-350	Rectangular NHR52 LENGTH 350CM 48,3x3mm
NHR52-400	Rectangular NHR52 LENGTH 400CM 48,3x3mm



NHR34/44/52 Box corners

In the NHR series corners can be made with Box corners, the box corners let you create configurations up to four ways, on the bottom and top of the box corner a leg or support can be added.

Let your creativity run wild, because these corner pieces offer endless possibilities. These boxcorners can be combined with NH24/34 and 44 to serve as a tower

NBOX-34R Box corner

Box corner NHR34



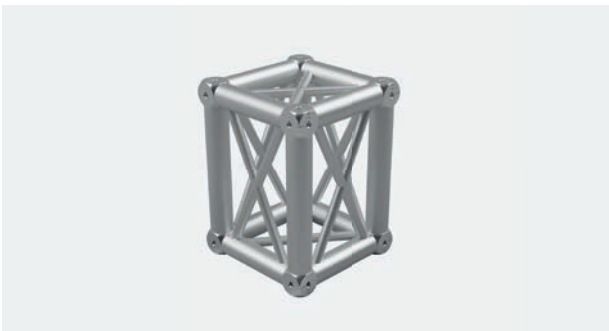
Technical specifications

Height	287 mm	11.3 in
Width	198 mm	7.8 in
Size Main Tube	50 x 3 mm	1.97 x 0.12 in
Size Bracing Vertical	20x2 mm	0.78 x 0.08 in
Size Bracing Horizontal	16x2 mm	0.62 x 0.08 in
Weight	8 kg	
Pin Position	Diagonal	
Coupling System	NC1/M12	
Alloy	EN AW 6082 T6	

Can be combined with NH24 as a tower truss by connecting it to the bottom of the box corner

NBOX-44R Box corner

Box corner NHR44



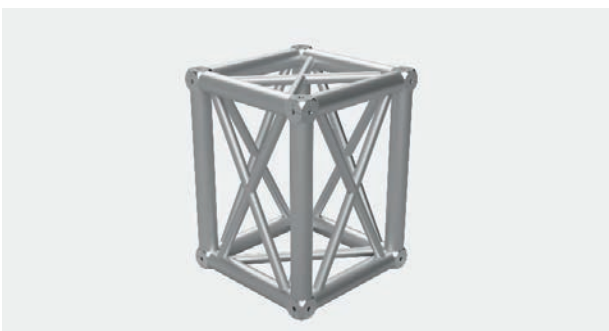
Technical specifications

Height	387 mm	15.2 in
Width	287 mm	11.3 in
Size Main Tube	50 x 3 mm	1.97 x 0.12in
Size Bracing	25 x 3 mm	0.98 x 0.12 in
Weight	12 kg	
Pin Position	Diagonal	
Coupling System	NC1/M12	
Alloy	EN AW 6082 T6	

Can be combined with NH34 as a tower truss by connecting it to the bottom of the box corner

NBOX-H52R Box corner

Box corner NHR52



Technical specifications

Height	518 mm	20.4 in
Width	387 mm	15.2 in
Size Main Tube	60 x 3 m	2.36 x 0.12 in
Size Bracing	25 x 3 mm	0.98 x 0.12 in
Weight	16 kg	
Pin Position	Diagonal	
Coupling System	NC1/M12	
Alloy	EN AW 6082 T6	

Can be combined with NH44 as a tower truss by connecting it to the bottom of the box corner

BOX Attachments

Productcode	Description
NC1-SCON-BOX	STEEL HALF COUPLER HOLE/M12 FOR BOX CORNERS
NC1-BOB75	FEMALE COUPLER 12MM HOLE L=75mm
NC1-BOB105	FEMALE COUPLER 12MM HOLE L=105mm