



NT30 Tower System



NT30 TOWER SYSTEM

The NT30 Tower system is a versatile tower system based on the NH34 truss. The NT30 Tower can be equipped with a sleeve block that can create a main rig with both NX/NH34 and NX/NH44 trusses.

This steel sleeve block can be equipped with male or female coupling parts on four sides. The base can be equipped with short or long outriggers and the top section is suitable for both motor hoists and manual hoists.

By default, the NT30 tower comes with a BASE-01 base section. But when a structure is built at high heights, covered or outside we recommend the use of the stronger BASE-02.

All this together makes the NT30 Tower system cost-efficient and versatile in use.

Technical specifications

Max. Height	8.00 m*	26 ft
Max. Loading capacity	1.000 kg*	2.200 lbs*
Type of mast sections	NX/NH34 Truss	
Connection system	NC1	
Available sleeve blocks	NH34 & NH44/	

** Before loading the system you should always have to calculate and determine what the maximum load is. Tower heights and sizes of the structure influence the total loading capacity.*

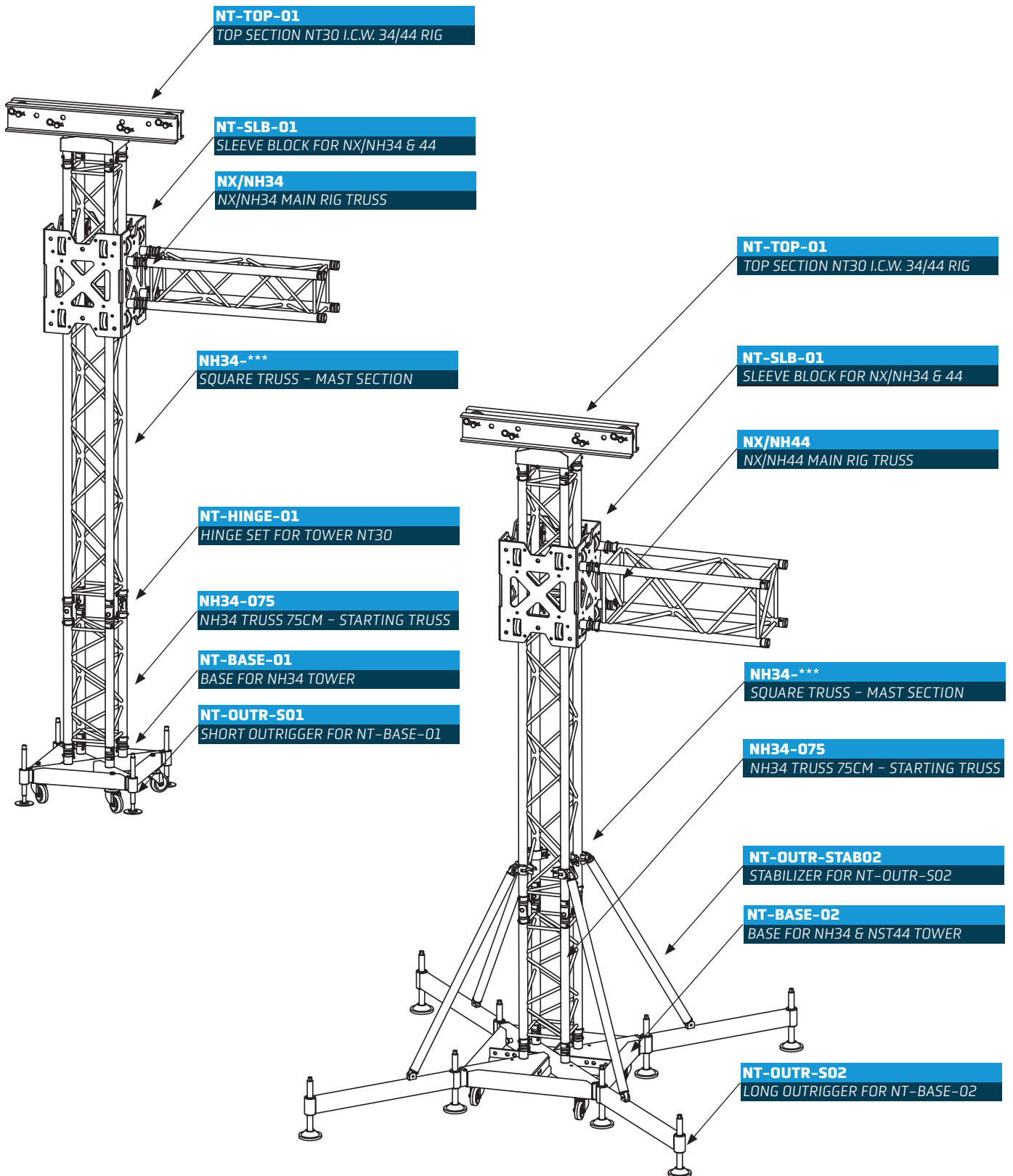
THE ESSENTIALS

- Versatile system (can be used for 34 & 44 rigs)
- Steel sleeve block provides a solid connection.
- Multifunctional for use with manual and motorized hoists
- Up to 8 meters*



NT30 Tower System explained

Assembling a tower is not a daily activity for everyone, that is why we have made an overview below of all the parts in a tower and on which position they are located. Down below we have pictured two towers, one with long outriggers and one with short outriggers.



NT30 Tower Parts

NT-BASE-00



Base section for NX/NH34 Truss

The spindle base is designed for use in small structures & roofs. It has a small footprint and can be easily concealed, which comes in handy in the exhibition, decoration and retail industry. Suitable for NX/NH34 truss, the base is equipped with two cable attachments. Can not be used stand alone. (spindle not included)

Specifications

Productcode	Height	Width	Weight	Coupling System	Material
NT-BASE-00	410 mm	407 mm	5 kg	NC1	Aluminium

* Excluding steel spindles (NA-FP-VAR01)

NT-BASE-01



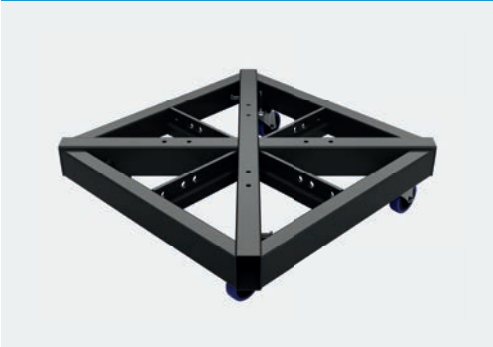
Base section steel for NT-TOWER 30 & 40 (excl. fem receiver)

The NT-BASE-01 is our standard steel base, for use with an NH34 tower. It can be used with either short or long outriggers, depending on the tower configuration. The base is equipped with 4 rotatable wheels, pre-drilled holes are available for mounting NC1-BOB75 receivers, which provide connection to the tower truss.

Specifications

Productcode	Height	Width	Depth	Coupling System	Material
NT-BASE-01	208 mm	628 mm	628 mm	NC1-BOB75 (not included)	Powdercoated Steel

NT-BASE-02



Reinforced Base section steel for NT-TOWER 30 & 40 (excl. fem receiver)

Our reinforced NT-BASE-02 is the recommended steel base for outdoor, covered or high height constructions on 30 & 40 cm towers. It can be used with either short or long outriggers, depending on the tower configuration. The base is equipped with 4 wheels that can rotate 360 degrees and pre-drilled holes are available for mounting NC1-BOB75 receivers, which ensures a strong connection with the tower truss. Equipped with cable attachments for cross wiring in roofs & constructions.

Specifications

Productcode	Height	Width	Depth	Coupling System	Material
NT-BASE-02	228 mm	793 mm	793 mm	NC1-BOB75 (not included)	Powdercoated Steel

OUTRIGGERS



Short & Long Outriggers for NT-BASE-01/02

The base should not bear the weight on the wheels, therefore long or short outriggers should always be used. The outriggers are held in place in the base by a safety pin. Use long outriggers always in combination with stabilizers.

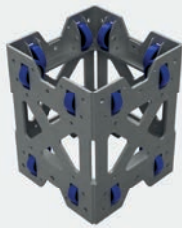
Specifications

Productcode	Height	Width	Depth	Meant for	Material
NT-OUTR-S01	330 mm	273 mm	100 mm	NT-BASE-01	Powdercoated Steel
NT-OUTR-L01	330 mm	1173 mm	100 mm	NT-BASE-01	Powdercoated Steel
NT-OUTR-S02	345 mm	307 mm	125 mm	NT-BASE-02	Powdercoated Steel
NT-OUTR-L02	345 mm	1207 mm	125 mm	NT-BASE-02	Powdercoated Steel



NT30 Tower Parts

Sleeve block



Steel sleeve block for NT30 Tower to connect 34/44 truss as rig

A versatile sleeve block is available for the NT30 tower, the fully welded sleeve block is designed to be used for both the 34 and 44 truss series as main rig. In the sleeve block several pre drilled holes are available to facilitate for dead-hanging and to connect guy wiring. Rubber wheels provide a smooth rise.

Specifications

Productcode	Height	Width*	Depth*	Coupling System	Material
NT-SLB-01	580 mm	487 mm	487 mm	NC1/M12	Galvanized steel
* working size is 450 x 450 mm, available connections: NC1-SCON25, NC1-B0B75					

TOP SECTION



Top section combi for NH30 Tower

Just like the sleeve block the top section is also versatile, it can be used for manual chain hoists but also powered motor hoists. In addition, the top section is equipped with 2 additional pins which can be used for dead hanging the structure.

Specifications

Productcode	Height	Width	Depth	Coupling System	Material
NT-TOP-01	280 mm	970 mm	297 mm	NC1	Aluminium

STABILIZERS



Stabilizers for NT-OUTR-L01

To create a stable base the stabilizers can be connected to the tower truss and the long outrigger.

Specifications

Productcode	Height	Width	Depth	i.c. with	Material
NT-OUTR-STAB01	105 mm	1385 mm	50 mm	NH34 Tower	Aluminium
NT-OUTR-STAB02	105 mm	1035 mm	50 mm	NST44 Tower	Aluminium

HINGE SET



Hinge set for NT30 Tower

Complete Hinge sets are available to create an easy connection and rise of the tower truss. The hinge sets are mounted on the starting truss, then the pre-assembled tower truss can be connected to it so that it can be pushed or pulled up easily and safely.

Specifications

Productcode	Height	Width	Depth	Coupling System	Material
NT-HINGE-01	168 mm	48 mm	62 mm	NC1	Aluminium