



# NT50 Tower System



## NT50 TOWER SYSTEM

Designed for extreme heights and high loads is the NEXT Truss NT50 Tower system. In combination with the NBR100 it can make ground supports up to 20 meters★ and handle over 5000kg★ of load.

The NT50 tower system works with NBT52 truss, this is a 53x53 cm truss with a 60x5 mm main tube. On one side of the truss, horizontal bracing is added to facilitate easy and safe climbing.

The steel welded sleeve block can be equipped with NC2-SCON25 for an easy connection of the NBR100 truss lengths, the base can be equipped with short or long outriggers and the top section is designed for a motor hoist and provides options for dead hanging.

### Technical specifications

Max. Height	20.00 m	65 ft
Max. Loading capacity	5.000 kg★	11.000 lbs★
Type of mast sections	NBT52 Truss	
Connection System	NC2	
Available sleeve blocks	NBR100	

*★ Before loading the system you should always have to calculate and determine what the maximum load is. Tower heights and sizes of the structure influence the total loading capacity.*

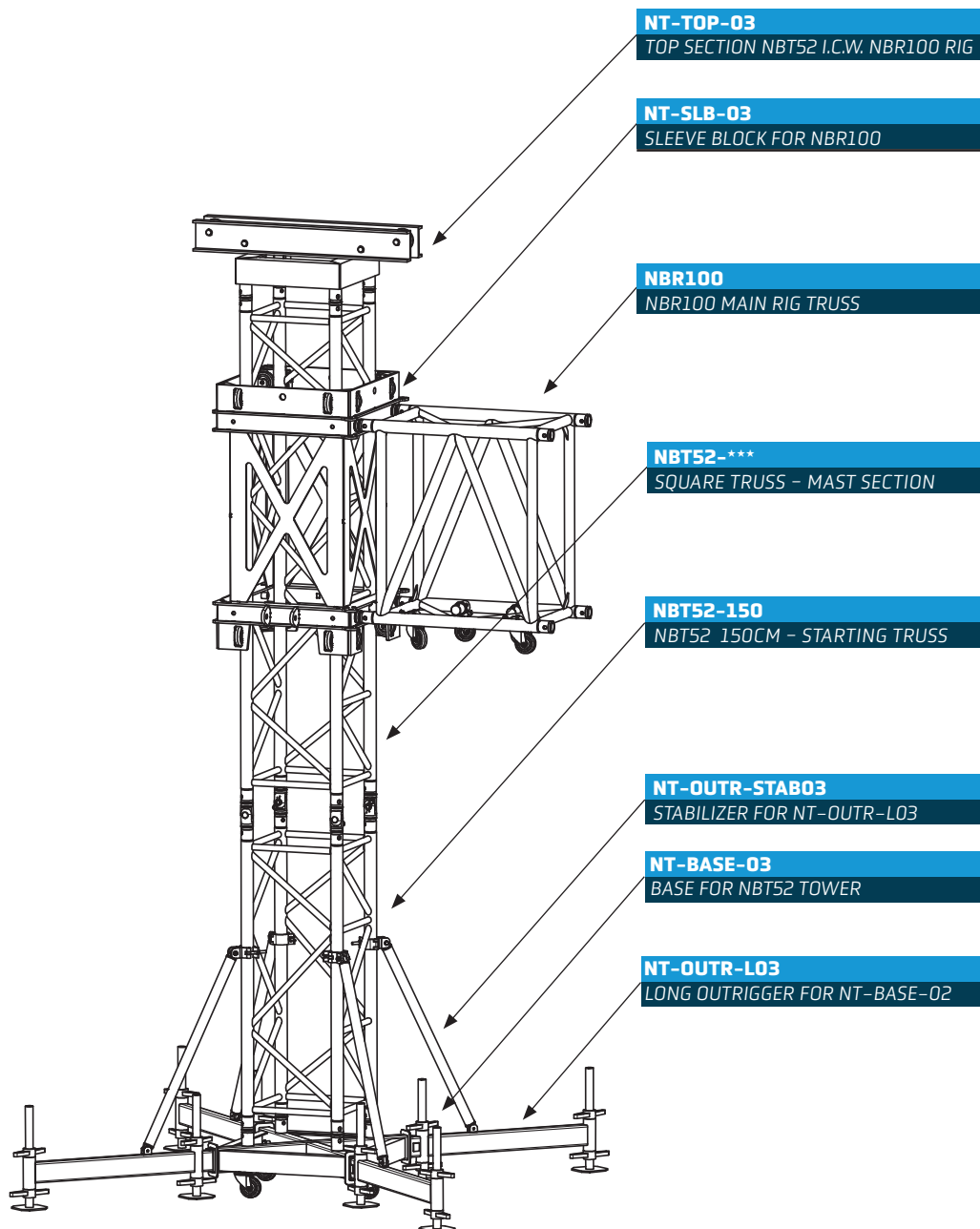
## THE ESSENTIALS

- High loading capacity
- Fully welded sleeve block gives an ultra strong connection
- Up to 20 meters



# NT50 Tower System explained

Assembling a tower is not a daily activity for everyone, that is why we have made an overview below of all the parts in a tower and on which position they are located. Down below we have pictured two towers, one with long outriggers and one with short outriggers.





# NT50 Tower Parts

## NT-BASE-03



*Heavy-Duty Base section steel for NT-TOWER 50 (excl. fem receiver)*

For our most powerful tower, we developed a Heavy Duty base, the biggest base in our tower series is made out of steel and comes with long reinforced outriggers heavy-duty spindles. The NT50 base is prepared to be equipped with the correct receivers to ensure a strong connection with the NBT52 tower truss sections.

### Specifications

Productcode	Height	Width	Depth	Coupling System	Material
NT-BASE-03	258 mm	819 mm	819 mm	NC2-B0B80 (not included)	Powdercoated Steel

## OUTRIGGERS



*Short & Long Outriggers for NT-BASE-03*

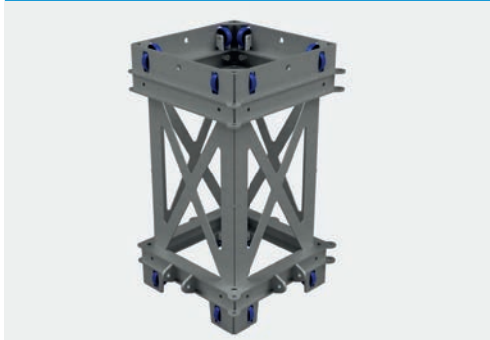
The base should not bear the weight on the wheels, therefore long or short outriggers should always be used. The outriggers are held in place in the base by a safety pin. Use long outriggers always in combination with stabilizers.

### Specifications

Productcode	Height	Width	Depth	Meant for	Material
NT-OUTR-S03	160 mm	280 mm	60 mm	NT-BASE-03	Powdercoated Steel
NT-OUTR-L03	160 mm	1180 mm	60 mm	NT-BASE-03	Powdercoated Steel

\* Size excluding steel spindles (NA-FP-VAR01)

## Sleeve block NBR100



*Steel Heavy-Duty sleeve block for NBT52 Tower to connect NBR100 truss as rig*

The heavy-duty tower system needs a very strong sleeve block, that is why the sleeve block for the NBR100 is made completely out of steel. In this X shaped sleeve block on both bottom and top pre drilled holes are available to facilitate for dead-hanging and to connecting guy wiring. The high quality rubber wheels provide a smooth rise over the tower truss.

### Specifications

Productcode	Height	Width	Depth	Coupling System	Material
NT-SLB-03	1308 mm	870 mm	870 mm	NC2-SCON25 / M16	Aluminium & Steel

\* Working size 690x690 mm



# NT50 Tower Parts

## TOP SECTION



*Top section combi for NST44 Tower i.c.w. NS52 & NBR100 rig*

The NT-TOP-03 is specially designed for the NT50 tower, it fits on top of the last part of the NBT52 mast sections. It can be used with a powered motor hoist (1 and 2 fall), and In addition, the top section is equipped with 2 additional pins which can be used for dead hanging of the structure.

### Specifications

Productcode	Height	Width	Weight	Coupling System	Material
NT-TOP-03	345 mm	1120 mm	549 mm	NC2	Aluminium

## STABILIZERS



*Stabilizers for NT-OUTR-L03*

To create a stable base the stabilizers can be connected to the tower truss and the long outrigger.

### Specifications

Productcode	Height	Width	Depth	i.c. with	Material
NT-OUTR-STAB03	110 mm	1234 mm	50 mm	NBT52 Tower	Aluminium

## HINGE SET



*Hinge set for NBT52 Tower*

Complete hinge sets are available to create an easy connection and rise of the tower truss. The hinge sets are mounted on the starting truss, then the pre-assembled tower truss can be connected to it so that it can be pushed or pulled up easily and safely.

### Specifications

Productcode	Height	Width	Depth	Coupling System	Material
NT-HINGE-02	225 mm	60 mm	67 mm	NC2	Aluminium